



GESA Joins ClinTrial Refer

We are very excited to announce a wonderful new addition to the ClinTrial Refer community- Gastroenterological Society of Australia (GESA).



GESA Board Members

The Gastroenterological Society of Australia (GESA) is the peak membership organisation for health care professionals and researchers working in the fields of gastroenterology and hepatology. The Society sets, promotes and continuously improves the standards of clinical practice, training, research and patient care in gastroenterology and hepatology in Australia. It's members provide opportunities for participation in clinical trials for many medical conditions including Inflammatory Bowel Disease, Viral Hepatitis, Liver Diseases and primary liver Cancer.

"GESA is very excited to launch the GESA-Clintrial Refer app. The opportunity to participate in a clinical trial offers Australian patients access to innovative and world class treatments and care years before such treatments are available through usual channels. Clinical trials offer the potential for significant benefit to participants, and the attentive care and close monitoring by the clinical trial team provides many patients a very positive experience through their disease journey. As clinical trials are often only available at limited study sites, the GESA-Clintrial Refer App provides up-to date information to referring doctors and patients about clinical trials that are recruiting in specific GI and Liver diseases, and details regarding the study design, inclusion and exclusion criteria, participating sites and who to contact. We believe the GESA-Clintrial Refer App will facilitate access for Australian patients with GI and liver diseases to world-leading treatments." Associate Professor Simone Strasser, President GESA.



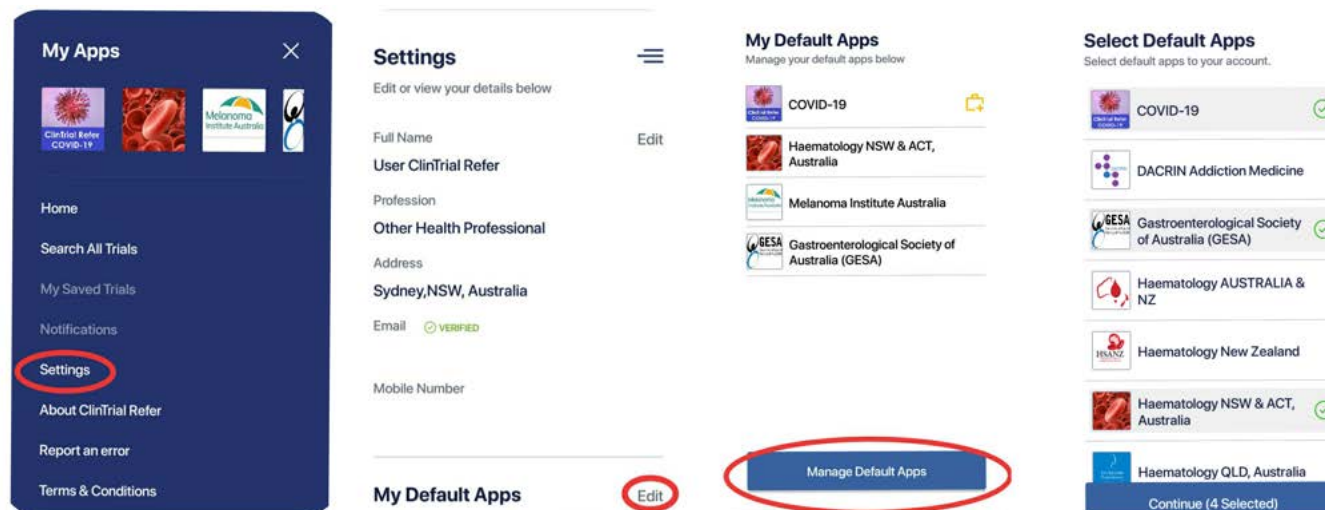
Please join us in welcoming GESA to the ClinTrial Refer community.

Visit their website www.gesa.org.au to learn more about them and see the amazing work that they are doing.

Did you know you can set up a Primary App (homescreen app) and Default App (favourite apps) if you have a discipline or provider preference? Setting this up provides you with fast direct access to your trials of choice.

How to set a Default App

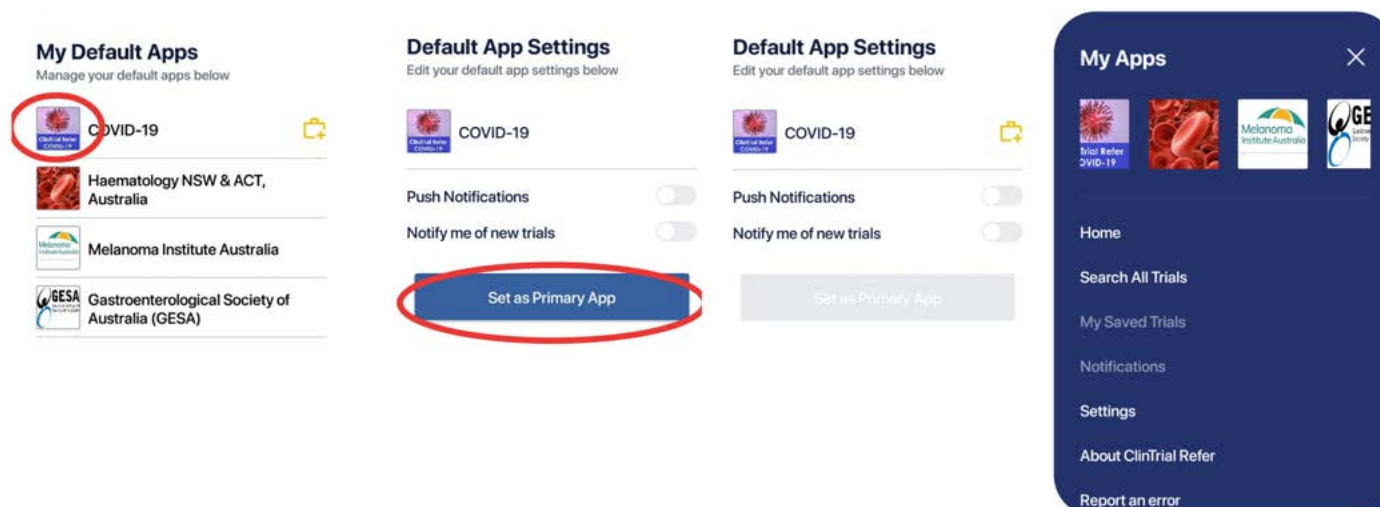
1. Go to settings menu
2. Go to “My Default Apps” and click “edit”
3. Click on “Manage Default Apps”
4. Select as many Default Apps as you like.



How to set a Primary App

To make an App your Primary App, you must first add it in your Default App list. Once it's in your Default App list, follow these steps to make it your Primary App:

1. Go to my Default Apps in setting menu.
2. Click “edit’ this will take you to “Default App settings”
3. Tap on the App icon you wish to set as your Primary App.
4. Select option to “set as Primary App”. (This is also where you can choose notification preferences for your Primary and Default App if you would like to know when new trials are uploaded into the Default App).



The yellow briefcase icon indicates that this is your Primary App. In the example above the user has one Primary App and three Default Apps. Go to your ClinTrial Refer App and select yours now!

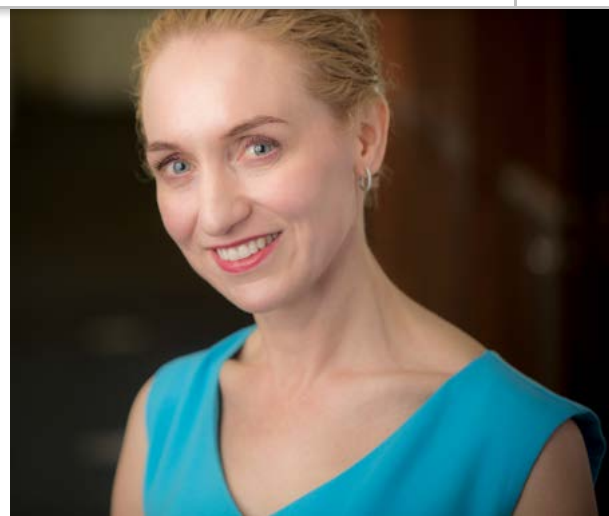
The Primary App (homescreen app), opens automatically when you use ClinTrial Refer. Default App(s) (also your favorite apps) will appear under My Apps when you click the menu bars on the top right corner.

Congratulations

We are absolutely delighted to see that Professor Georgina Long- co-director of Melanoma Institute Australia- has been bestowed with an Order Of Australia for her distinguished services to medicine, particularly to Melanoma clinical translational research and to professional medical societies.

“I am truly humbled by this honour, and I dedicate it to all melanoma patients we have lost to this disease and their families.

collective effort of the dedicated multi-disciplinary team at Melanoma Institute Australia that I co-lead with my colleague and friend Professor Richard Scolyer. This honour is testament to the dedication of our entire team.” Professor Georgina Long AO



Melanoma Institute Australia (MIA) is one of many valued clients in the ClinTrial Refer community and Professor Georgina Long has been a strong supporter and advocate of ClinTrial Refer. It is wonderful to see her hardwork and dedication being rewarded in such a prestigious and honorable way.

The Melanoma Institute Australia is a not-for-profit organisation dedicated to preventing and curing melanoma through innovative, world-class research, treatment and education programs. They aim to lessen the impact of melanoma on the world. *“Melanoma patients and their families are the inspiration for what we do – one death every five hours is a devastating statistic and our team will continue our research unabated until we reach zero deaths from melanoma.”* says Professor Georgina Long AO.

You can find the MIA trials app in the ‘Browse Apps’ section of the ClinTrial Refer platform or search for melanoma trials using the ClinTrial Refer “Search All Trials” button.

Keep up the great work MIA and our sincerest congratulations to Prof Georgina Long AO.

What our users are saying



Monash University trial team (L-R)

Mr Neil Waters (Senior Project Officer and CPI), Ms Vanessa Fox (Project Coordinator and CPI), A/Prof Zoe McQuilten, Prof Erica Wood and A/Prof Stephen Ting

“Conducting clinical trials for aplastic anaemia can be hampered due to the rarity of the disease, listing our trial on ClinTrial-Refer allows both patients and clinicians to search for the most current and suitable trial options available.”



Ms Vanessa Fox- Project Coordinator, Monash University

Would you like to be an inspiration for someone?

Share your story if you have taken part in a clinical trial or supported someone through a trial. Your stories and thoughts are important to us and can be a great encouragement to others. If you'd like to share a clinical trial story please email us at raheela@clintrialreferapp.com. We'd love to hear from you.



Facebook



Twitter



Website



ADDRESS

HCRN c/o Ground Floor,
W R Pitney Building, St George Hospital,
Gray Street, KOGARAH 2217
Australia

EMAIL

www.clintrial.org.au/

admin@clintrialreferapp.com

[Unsubscribe](#)

Copyright © *2019* *ClinTrial Refer*, All rights reserved.

This email was sent to <<Email Address>>

[why did I get this?](#) [unsubscribe from this list](#) [update subscription preferences](#)
ClinTrialRefer · St George Hospital · Gray Street · Kogarah, Nsw 2017 · Australia